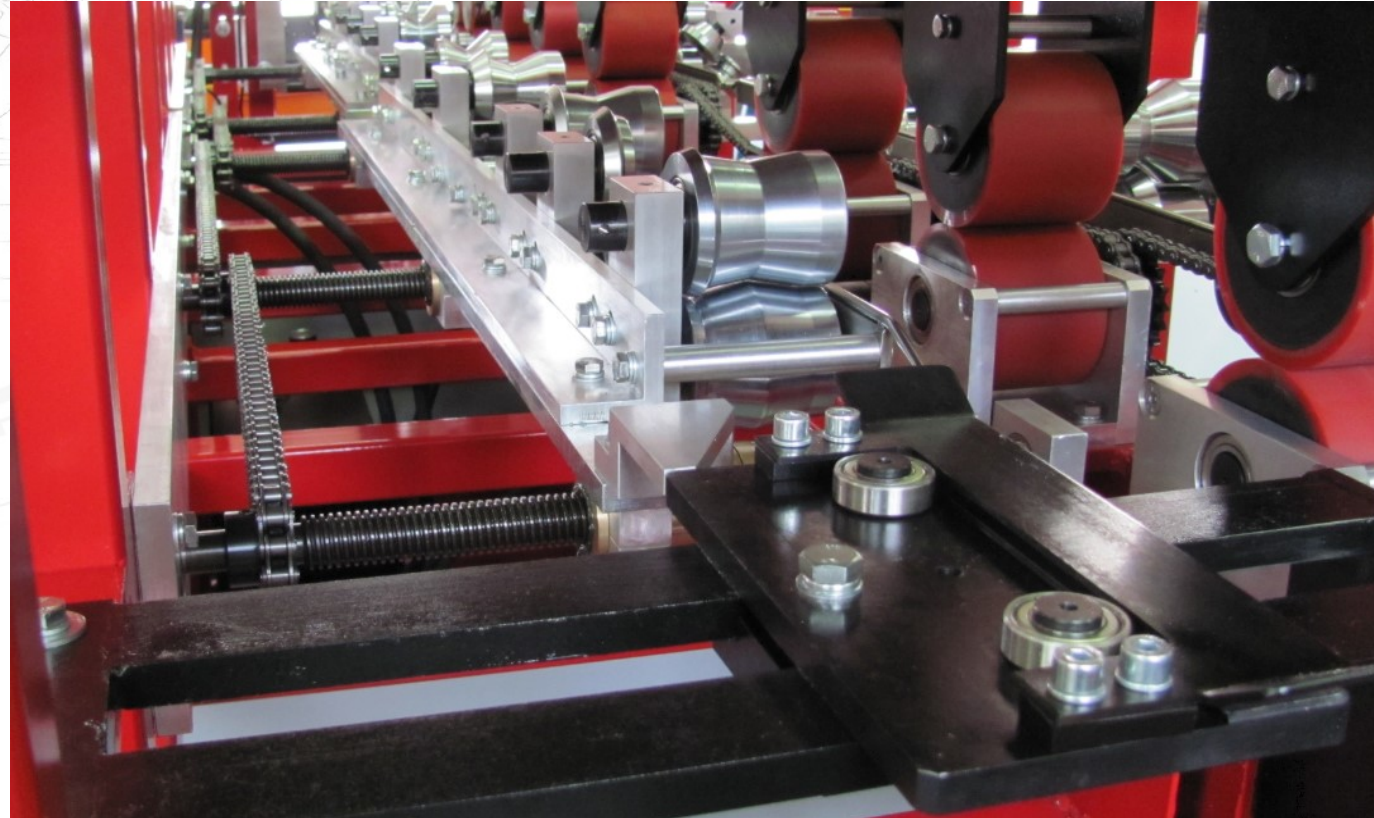




Rollforming Systems Machinery



Ul. Wojska Polskiego 3,
39-300 Mielec, Polska



rsm@rsm-mielec.com
www.rsm-mielec.com



+48 17 788 64 92

Rollforming Systems Machinery

Rollforming Systems Machinery (RSM) - have been operating on the Polish market since 1999. We specialize in the production of machinery and equipment for the production of gutters, downspouts and roof panels in a continuous Englert system.

We successfully build machines for special profiles, also according to the ideas of our clients and in close cooperation with them. Each such process is preceded by an analysis and technical requirements carried out by our own design office

All our machines have CE approval certificates

More than half of manufactured machines successfully compete on the American and West Europe market.

The advantage of our machines is the production of panels and gutters of any length, also directly on the construction site, which significantly reduces the final cost of the constructed roofing

Thus, companies using our solutions provide themselves with larger areas to generate profits!





Rollforming Systems Machinery

content

	No model	page
I. Gutter and downspout pipe machines		
- 'K' and rectangular style gutter machines		
	555	5
	650	6
	660	7
	670	8
	770	9
	800	10
	850	11
	D10	12
	REK 150	13
- half-round style gutter machines		
	REO	15
	RO127	16
- rectangular downspout pipe machines		
	RK1 2x3	18
	RK2 3x4	19
	RK3	20
	RK4 4x5	21
	RK6	22
- round downspout pipe machines		
	RS 76	24
	RS 80	25
	RS 87	26
	RS 99	27

	No model	page
II. Roofing panel machines		
	MPL	29
	-//-	30
	-//-	31
	1105	32
	FP 1300	33
III. Special profile machines		
- Rectangular pipe bending (elbow) machine		
	GM 2x3	35
	GM 3x4	
- Round pipe bending (elbow) machine		
	GM 76	36
	GM 99	
- Machine for special profile – fence panel		
	MDS	37
- Machine for special profile – fence panel		
	MSH	38
- Machine for special profile – soffit panel		
	PS 3	39
- Machine for special profile – soffit molding		
	J 75	40
- Machine for special profile – wall cover		
	FR 6	41
- Machine for special profile – gutter		
	B 205	42
- Machine for special profile – cultivation trough		
	TR 1	43
IV. Accessories		
- Coil cradles		
- Gutter stands		
- Gutter roller tables		
		45



Rollforming Systems Machinery

I. Gutter and downspout pipe machines

- 'K' and rectangular style gutters machines



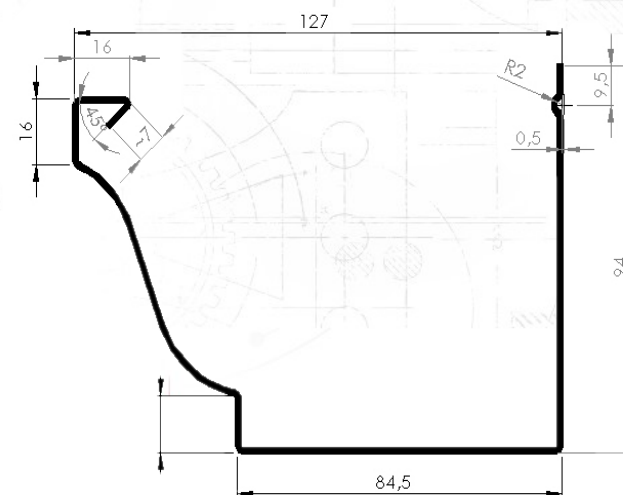
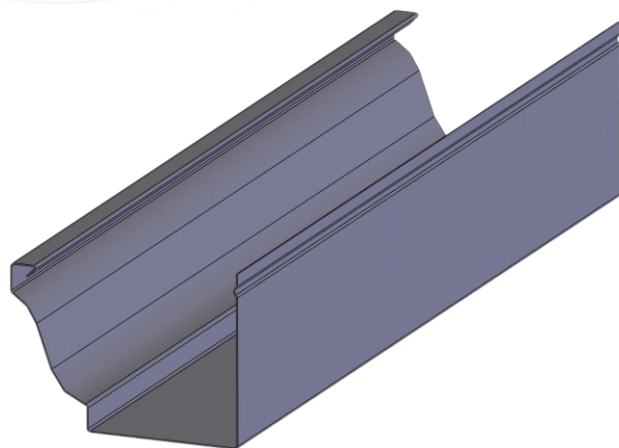
Rollforming Systems Machinery

555



TECHNICAL SPECIFICATIONS

L x W x H:	2440 x 660 x 450 [mm]
Weight:	~ 455 [kg]
Speed:	~ 10÷13 [m/min]
Drive:	electric
Input material	aluminum
width/gauge	300 x 0,7 [mm]
Guillotine (shear):	manual
Control:	manual
Power (option):	230 [V] (110 V)





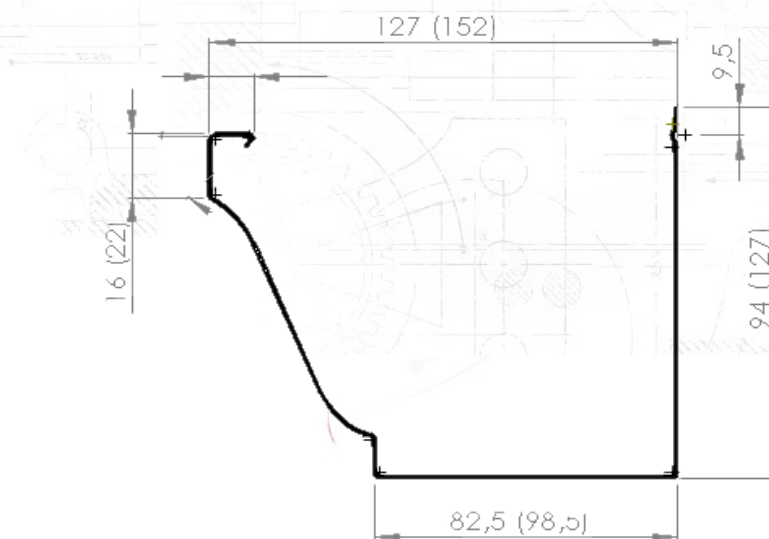
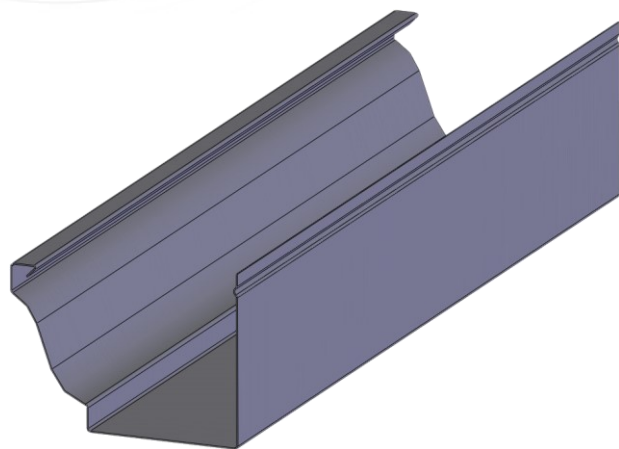
Rollforming Systems Machinery

650



TECHNICAL SPECIFICATIONS

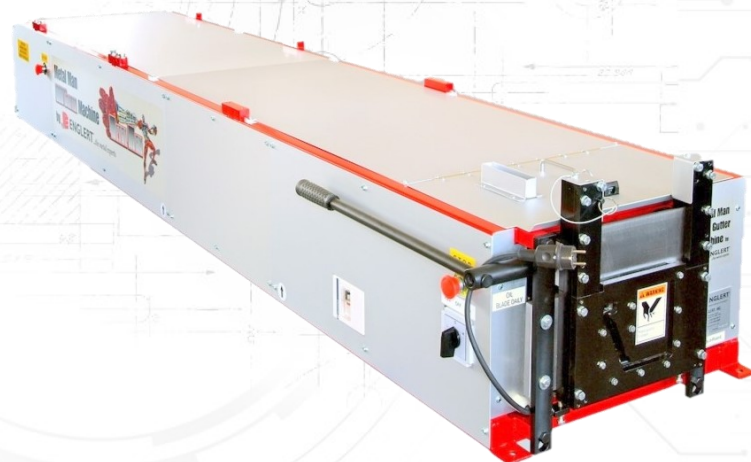
L x W x H:	3040 x 760 x 650 [mm]
Weight:	~ 565 [kg]
Speed:	~ 10÷13 [m/min]
Drive:	electric
Input material	aluminum
Width/gauge	300 or 380 x 0,7 [mm]
Guillotine (shear):	manual
Sterowanie:	manual
Power (option):	230 [V] (110 V)





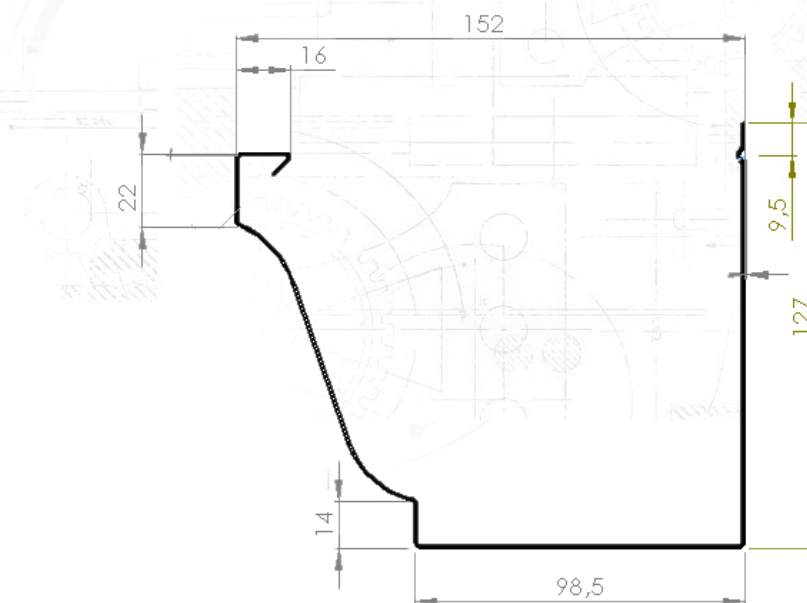
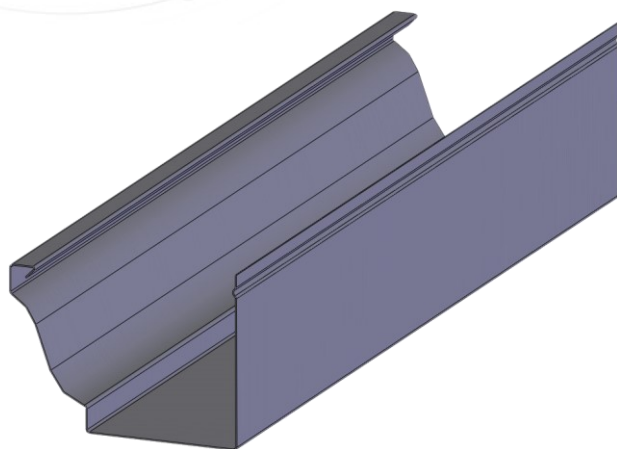
Rollforming Systems Machinery

660



TECHNICAL SPECIFICATIONS

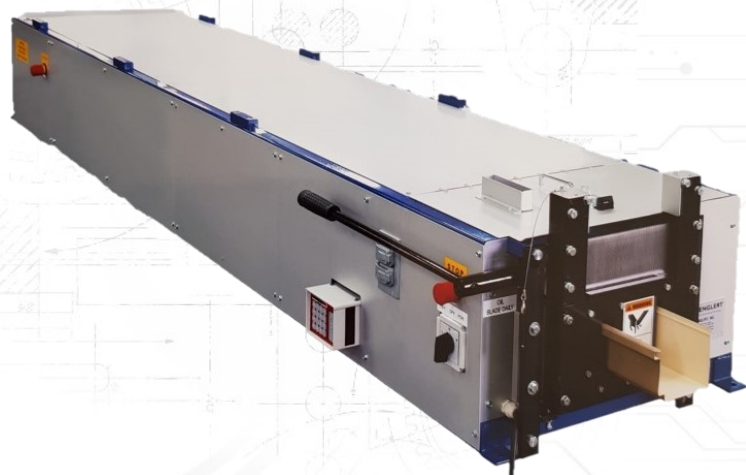
L x W x H:	3040 x 760 x 650 [mm]
Weight:	~ 565 [kg]
Speed:	~ 10÷13 [m/min]
Drive:	electric
Input material width/gauge:	aluminum 380 x 0,7 [mm]
Guillotine (shear):	manual
Control:	manual
Power (option):	230 [V] (110 V)





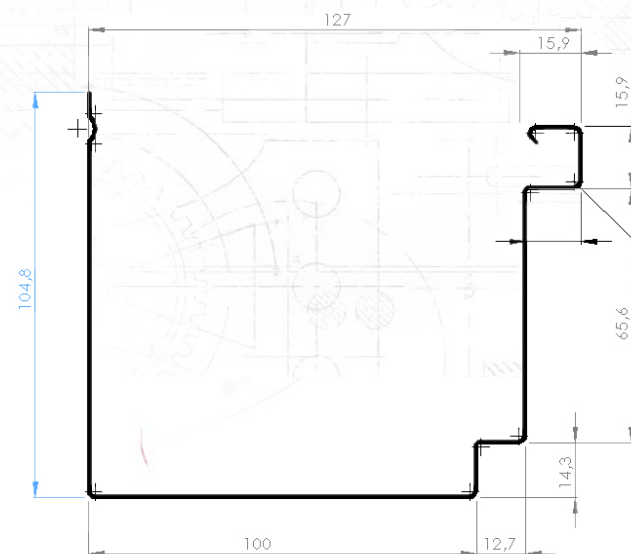
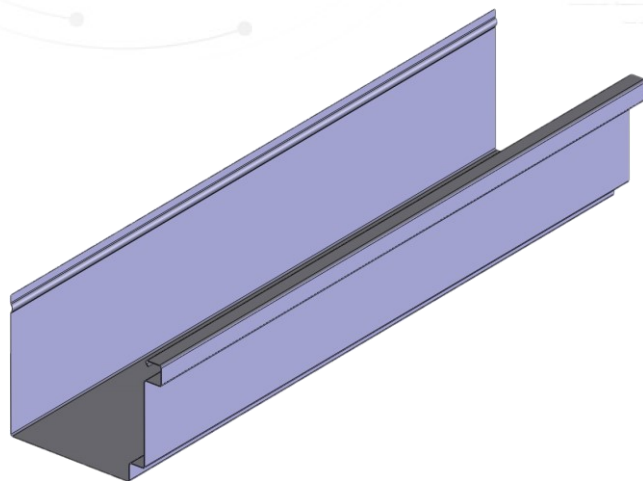
Rollforming Systems Machinery

670



TECHNICAL SPECIFICATIONS

L x W x H:	3040 x 760 x 650 [mm]
Weight:	~ 565 [kg]
Speed:	~ 10÷13 [m/min]
Drive:	electric
Input material	aluminum
width/gauge	338 x 0,7 [mm]
Guillotine (shear):	manual
Control:	manual
Power (option):	230 [V] (110 V)





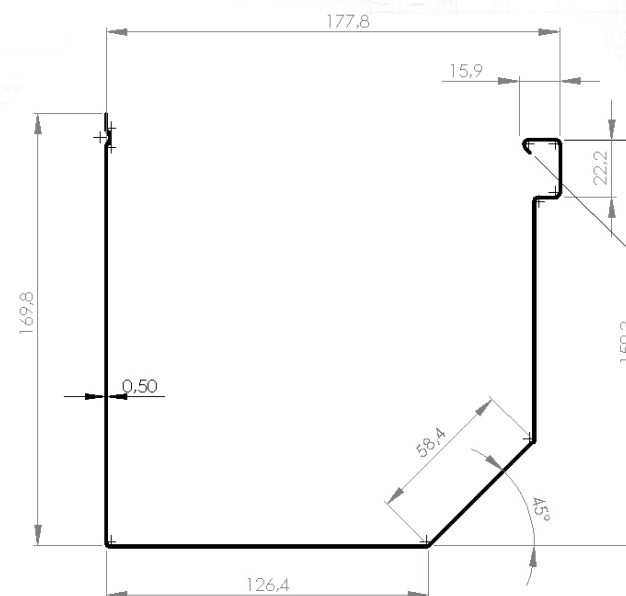
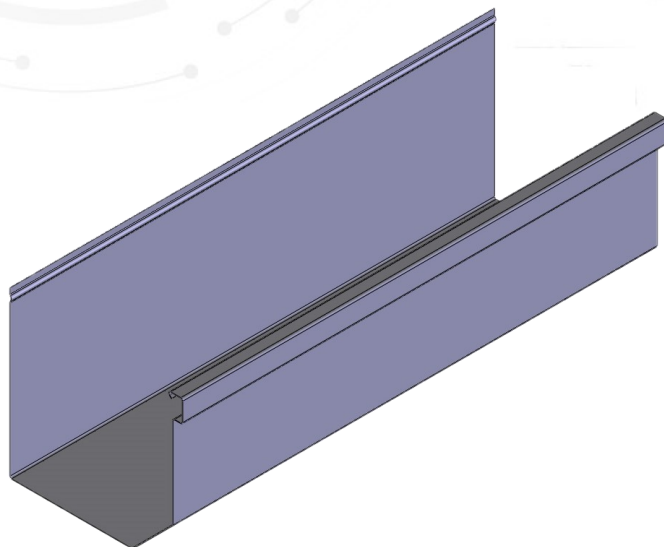
Rollforming Systems Machinery

770



TECHNICAL SPECIFICATIONS

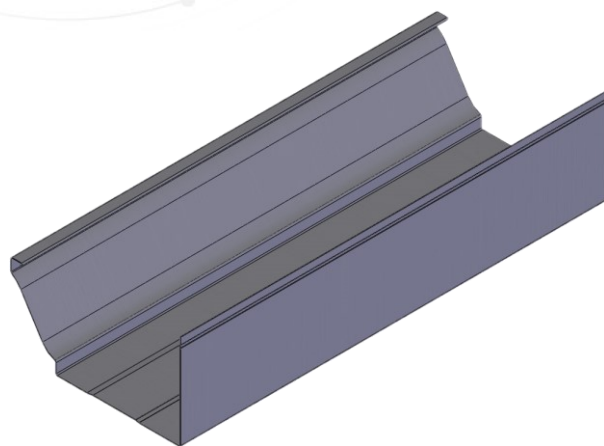
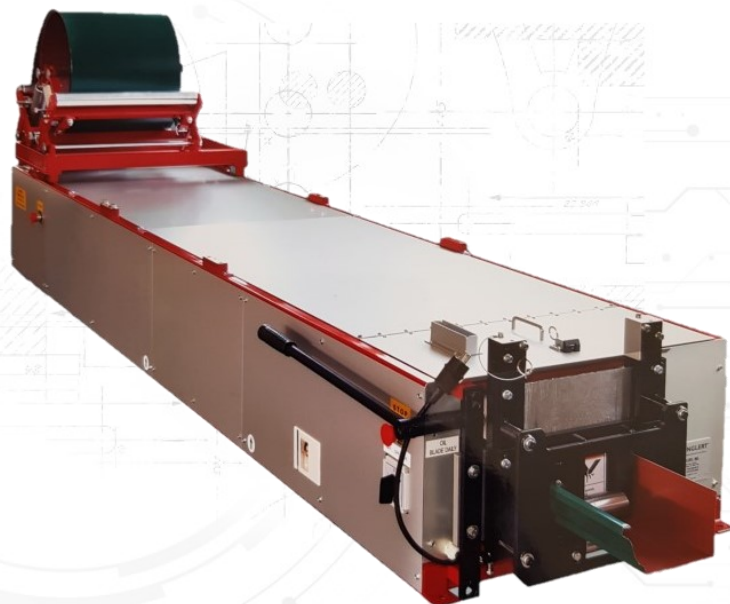
L x W x H:	4750 x 800 x 505 [mm]
Weight:	~ 800 [kg]
Speed:	~ 11÷13 [m/min]
Drive:	electric
Input material	steel
width/gauge:	508 ÷ 610 x 0,5 [mm]
Guillotine (shear):	manual
Control:	manual
Power (option):	230 [V] (110 V)





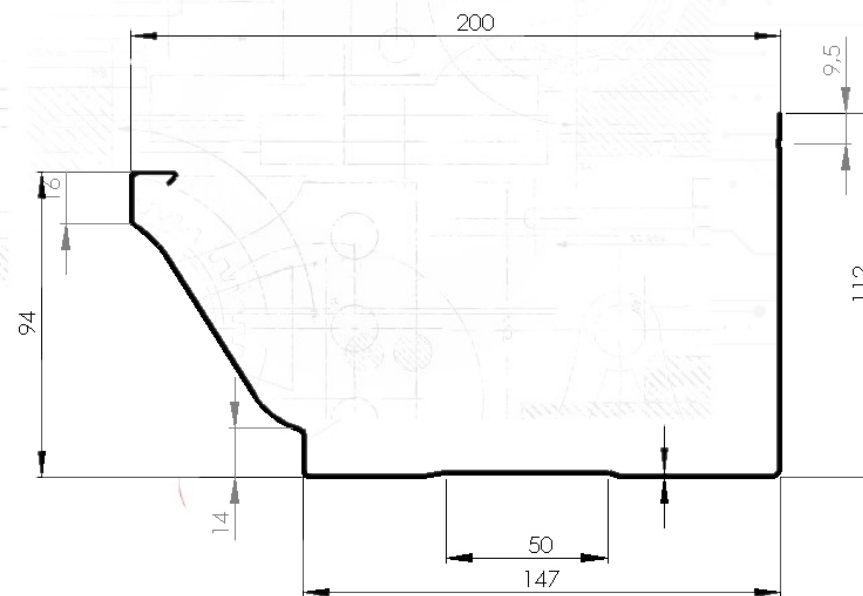
Rollforming Systems Machinery

800



TECHNICAL SPECIFICATIONS

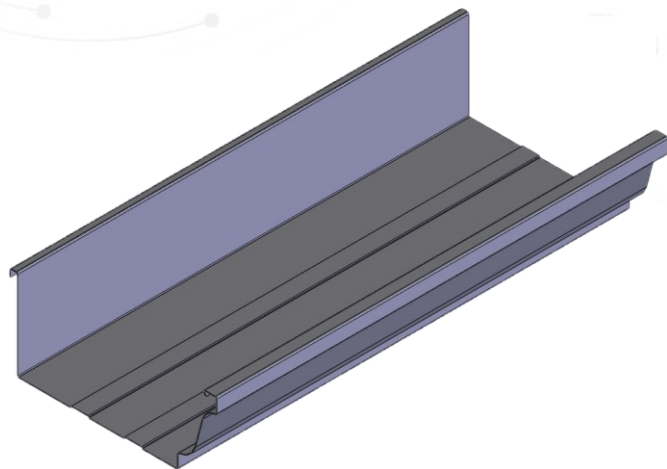
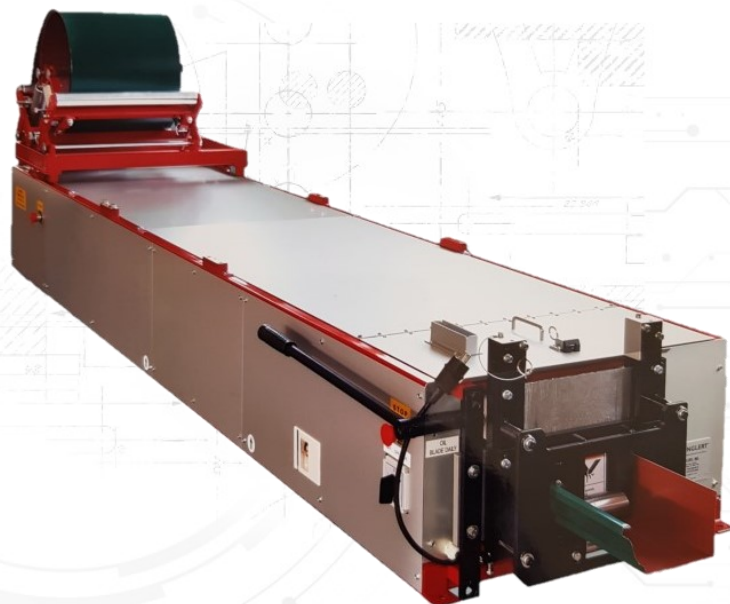
L x W x H:	3100 x 860 x 550 [mm]
Weight:	~ 565 [kg]
Speed:	~ 11÷12 [m/min]
Drive:	electric
Input material	aluminum
width/gauge	380 x 0,7 [mm]
Guillotine (shear):	manual
Control:	manual
Power (option):	230 [V] (110 V)





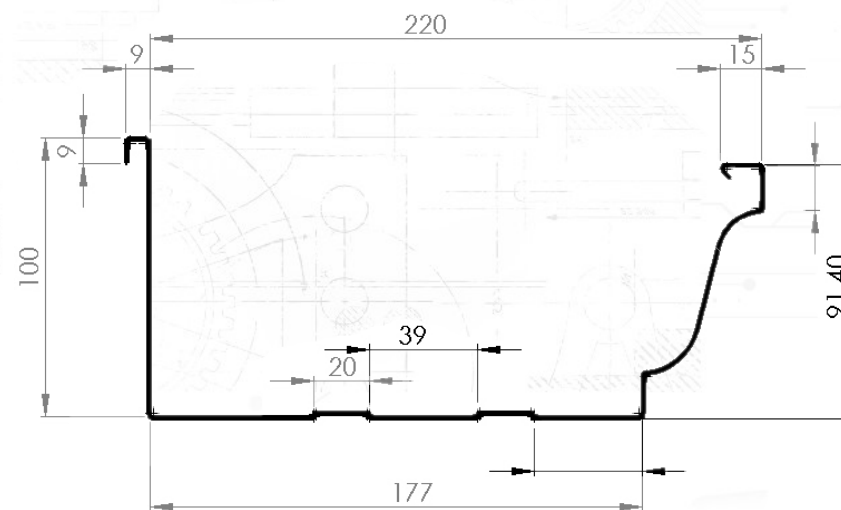
Rollforming Systems Machinery

850



TECHNICAL SPECIFICATIONS

L x W x H:	3100 x 860 x 550 [mm]
Weight:	~ 560 [kg]
Speed:	~ 11÷12 [m/min]
Drive:	electric
Input material	aluminum
width/gauge	416 x 0,7 [mm]
Guillotine (shear):	manual
Control:	manual
Power (option):	230 [V] (110 V)





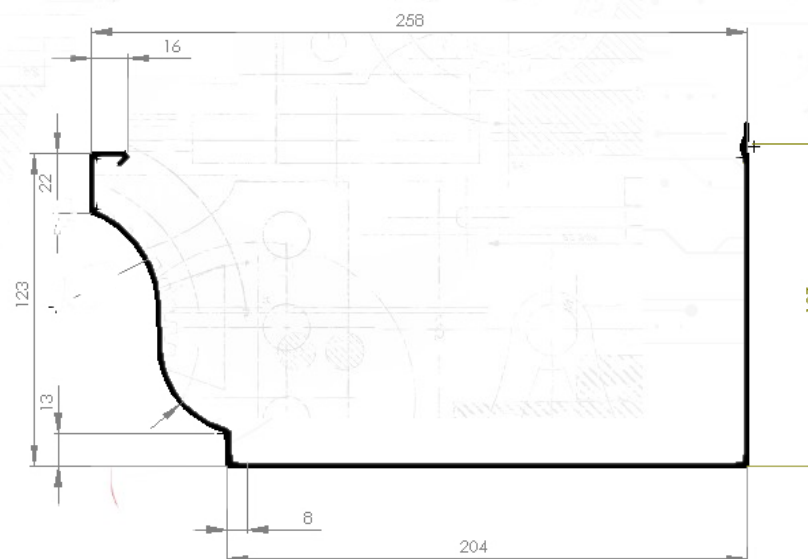
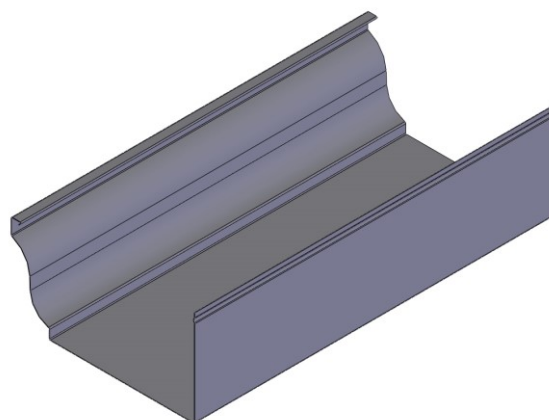
Rollforming Systems Machinery

D10



TECHNICAL SPECIFICATIONS

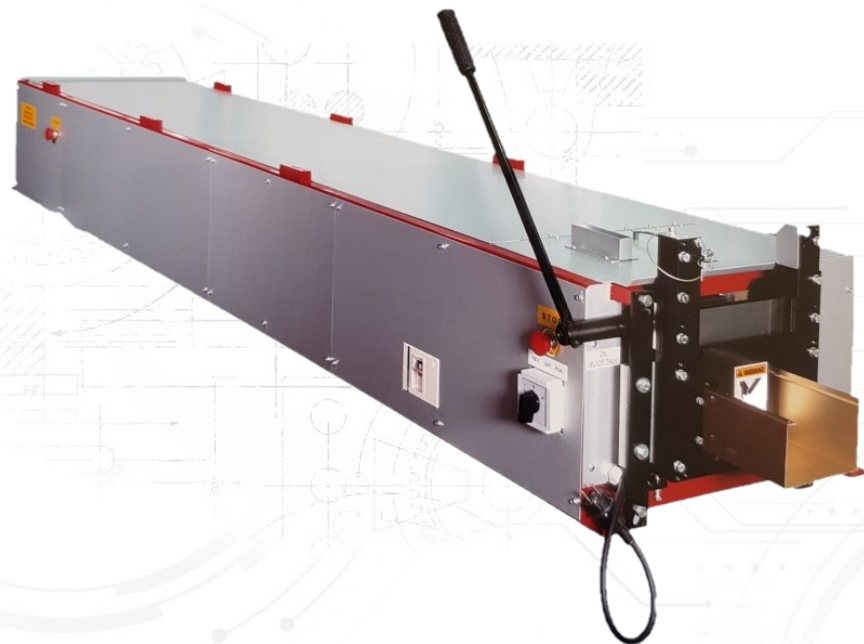
L x W x H:	3100 x 730 x 450 [mm]
Weight:	~ 750 [kg]
Speed:	~ 11÷12 [m/min]
Drive:	electric
Input material	aluminum
width/gauge	492 x 0,7 [mm]
Guillotine (shear):	manual
Control:	manual
Power (option):	230 [V] (110 V)





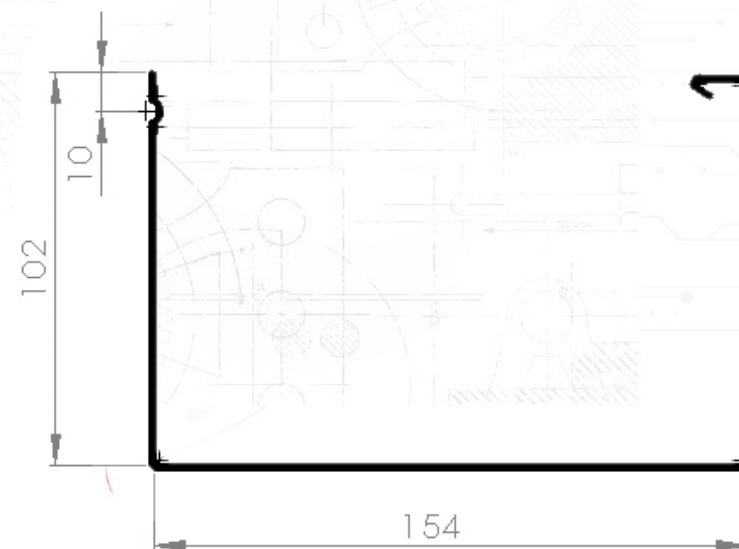
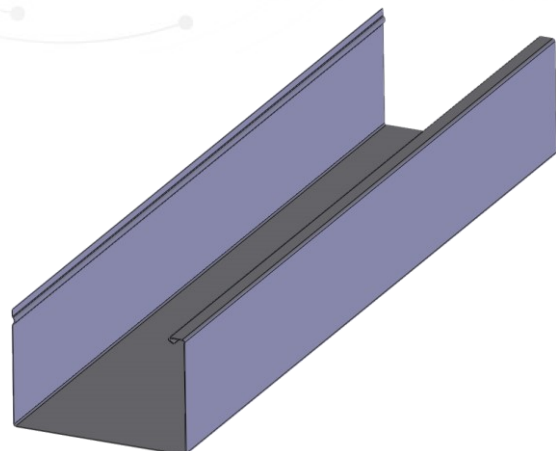
Rollforming Systems Machinery

REK 150



TECHNICAL SPECIFICATIONS

L x W x H:	3040 x 660 x 450 [mm]
Weight:	~ 535 [kg]
Speed:	~ 10÷13 [m/min]
Drive:	electric
Input material	aluminum
width/gauge	380 x 0,7 [mm]
Guillotine (shear):	manual
Control:	manual
Power (option):	230 [V] (110 V)





Rollforming Systems Machinery

I. Gutter and downspout pipe machines

- Half-round style gutter machines



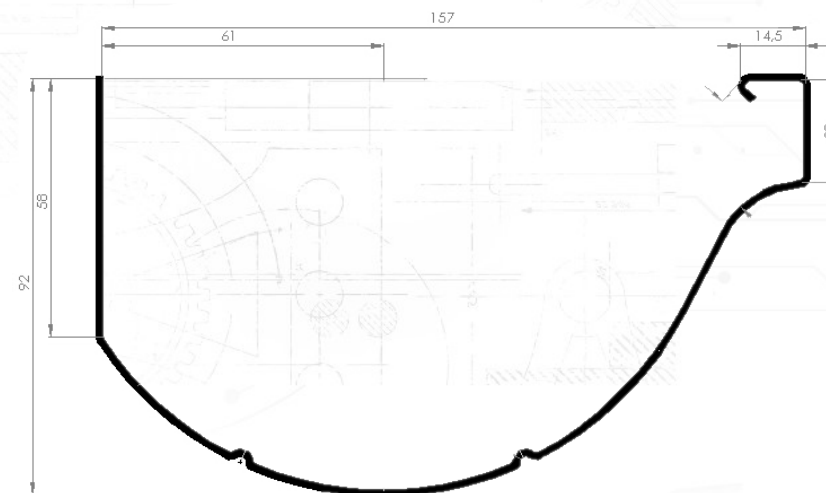
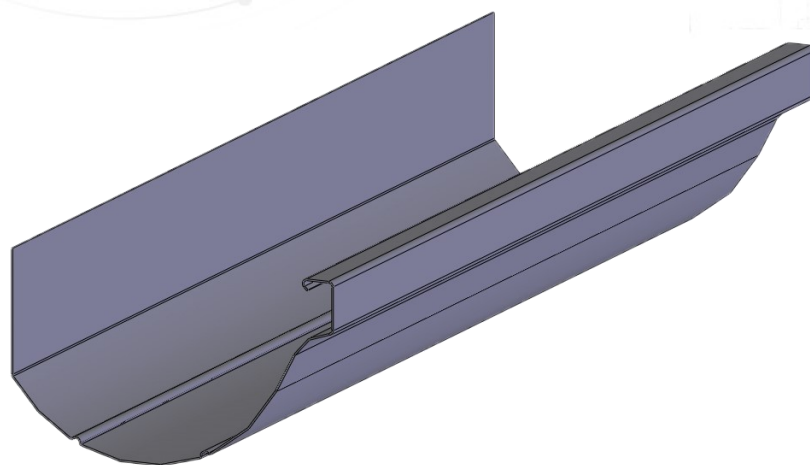
Rollforming Systems Machinery

REO



TECHNICAL SPECIFICATIONS

L x W x H:	3500 x 700 x 500 [mm]
Weight:	~ 420 [kg]
Speed:	~ 10÷12 [m/min]
Drive:	electric
Input material	aluminum
width/gauge:	300 x 0,7 [mm]
Guillotine (shear):	manual
Control:	manual
Power (option):	230 [V] (110 V)





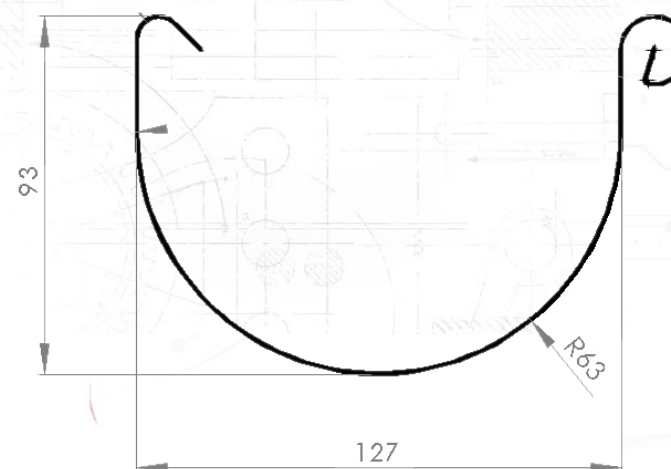
Rollforming Systems Machinery

RO 127



TECHNICAL SPECIFICATIONS

L x W x H:	3500 x 660 x 450 [mm]
Weight:	~ 455 [kg]
Speed:	~ 10÷13 [m/min]
Drive:	electric
Input material	aluminum
width/gauge	300 x 0,7 [mm]
Guillotine (shear):	circular saw
Control:	manual
Power (option):	230 [V] (110 V)





Rollforming Systems Machinery

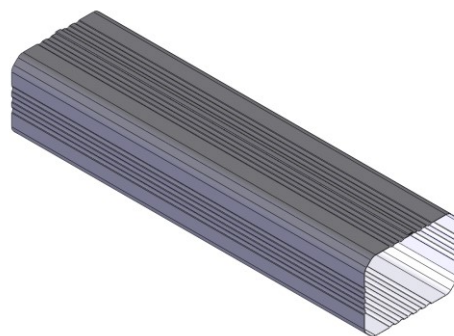
I. Gutter and downspout pipe machines

- rectangular downspout pipe machines



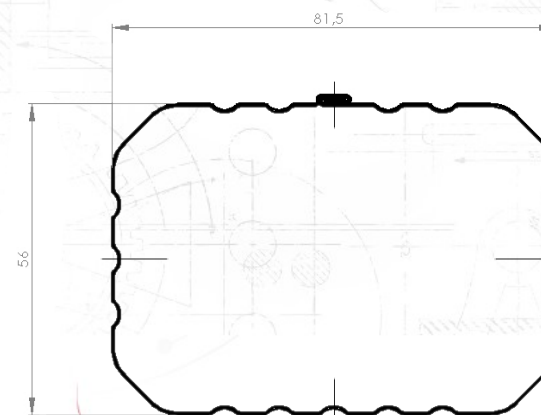
Rollforming Systems Machinery

RK 1



TECHNICAL SPECIFICATIONS

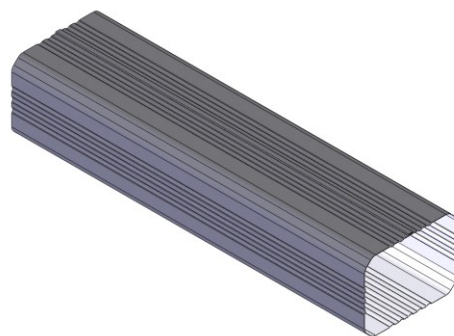
L x W x H:	3600 x 660 x 1300 [mm]
Weight:	~ 700 [kg]
Speed:	~ 12 [m/min]
Drive:	electric
Input material width/gauge	aluminum 267x 0,6 [mm]
Guillotine (option):	circular saw (hdraulic)
Control (option):	manual (computer)
Power (option):	400 [V] (230 V)





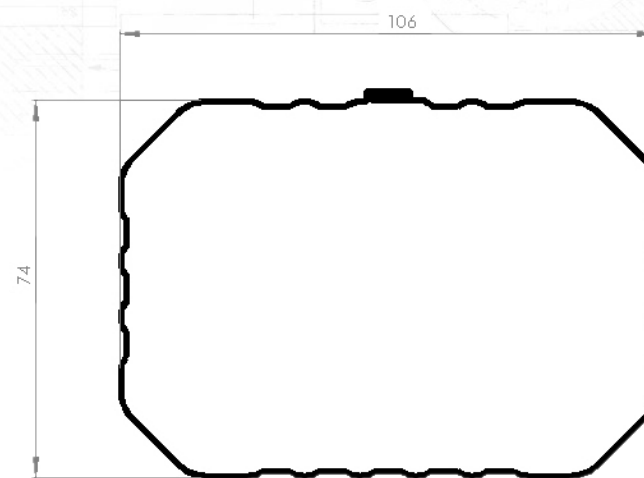
Rollforming Systems Machinery

RK 2



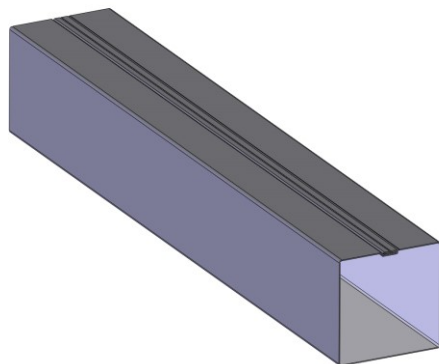
TECHNICAL SPECIFICATIONS

L x W x H:	5100 x 700 x 1300 [mm]
Weight:	~ 900 [kg]
Speed:	~ 12 [m/min]
Drive:	electric
Input material width/gauge	aluminum 345 x 0,7 [mm]
Guillotine (option):	hydraulic
Control (option):	manual (computer)
Power (option):	400 [V] (230 V)





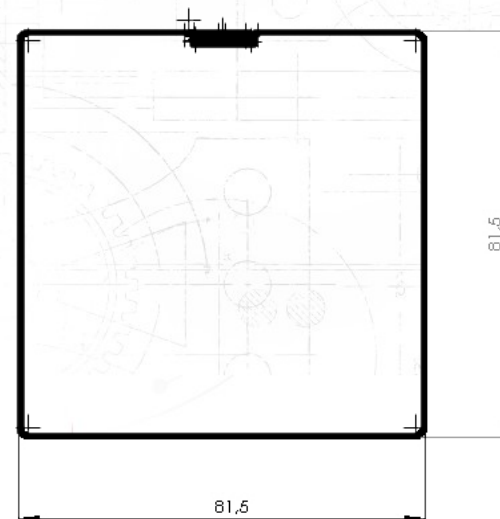
Rollforming Systems Machinery



RK 3

TECHNICAL SPECIFICATIONS

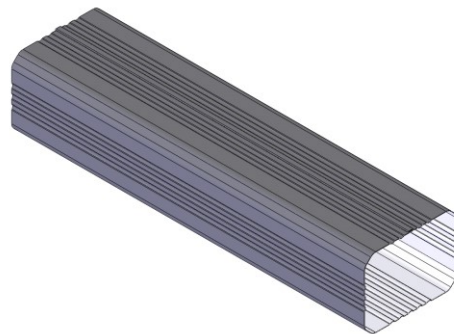
L x W x H:	5000 x 700 x 1120 [mm]
Weight:	~ 1100 [kg]
Speed:	~ 8÷10 [m/min]
Drive:	electric
Input material	aluminum
width/gauge	345 x 0,7 [mm]
Guillotine (shear):	circular saw
Control (option):	manual (computer)
Power (option):	400 [V] (230 V)





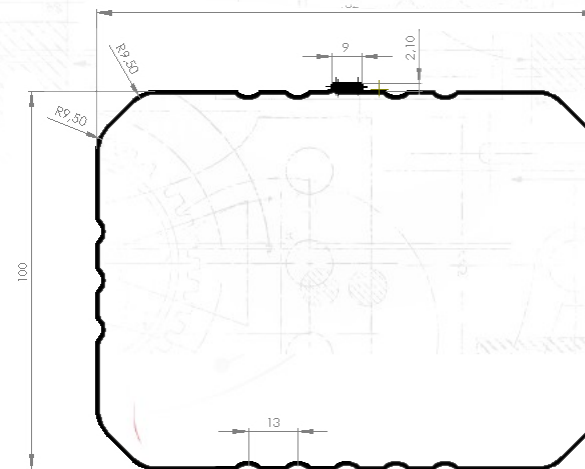
Rollforming Systems Machinery

RK 4



TECHNICAL SPECIFICATIONS

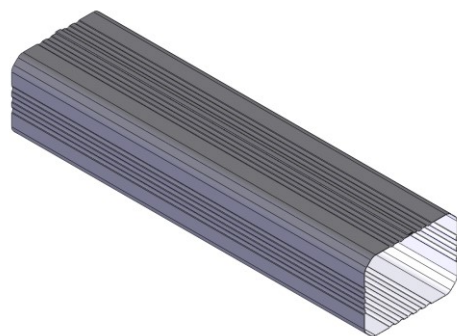
L x W x H:	6000 x 700 x 1350 [mm]
Weight:	~ 1000 [kg]
Speed:	~ 12 [m/min]
Drive:	electric
Input material width/gauge	steel (aluminum 0,7mm) 448 x 0,5 [mm]
Guillotine (option):	circular saw (hydraulic)
Control (option)	manual (computer)
Power (option):	400 [V] (230 V)





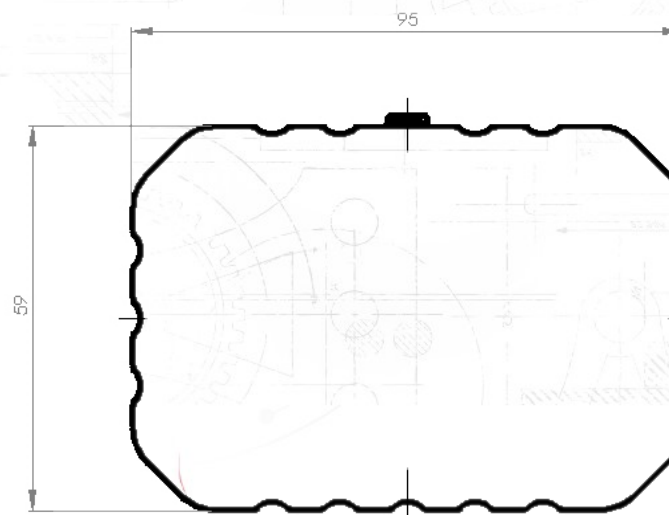
Rollforming Systems Machinery

RK 6



TECHNICAL SPECIFICATIONS

L x W x H:	5100 x 700 x 1300 [mm]
Weight:	~ 900 [kg]
Speed:	~ 12 [m/min]
Drive:	electric
Input material width/gauge	steel (aluminum 0,7 mm) 300 x 0,5 [mm]
Guillotine (option):	circular saw (hydraulic)
Control (option):	manual (computer)
Power (option):	400 [V] (230 V)





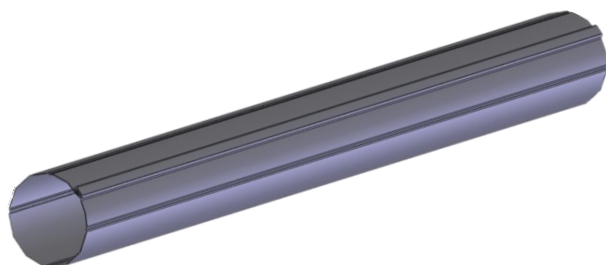
Rollforming Systems Machinery

I. Gutter and downspout pipe machines

- round downspout pipe machines



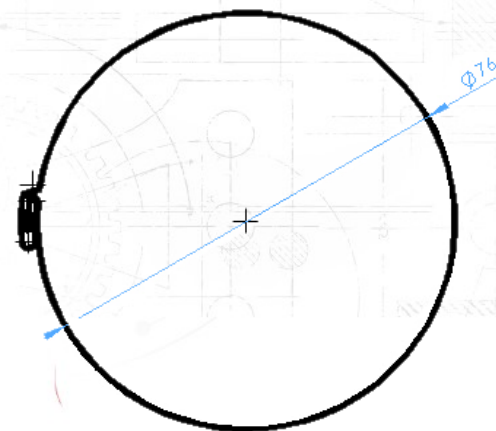
Rollforming Systems Machinery



RS 76

TECHNICAL SPECIFICATIONS

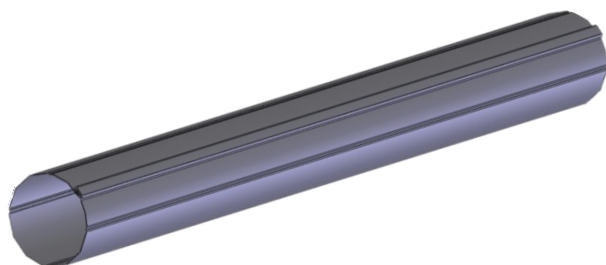
L x W x H:	4600 x 630 x 1200 [mm]
Weight:	~ 950 [kg]
Speed:	~ 11÷12 [m/min]
Drive:	electric
Input material	steel (aluminum 0,7)
width/gauge	267 x 0,5 [mm]
Guillotine (shear):	circular saw
Control (option):	manual (computer)
Power (option):	400 [V] (230 V)





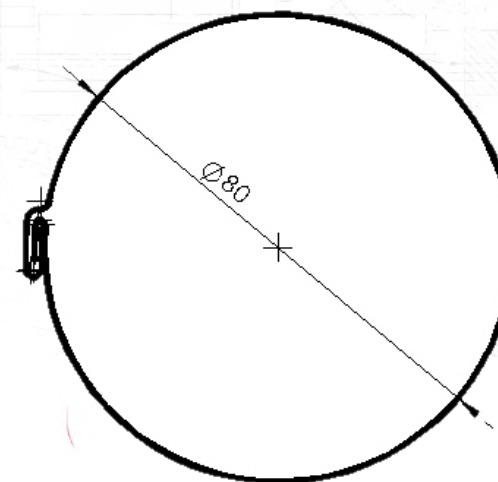
Rollforming Systems Machinery

RS 80



TECHNICAL SPECIFICATIONS

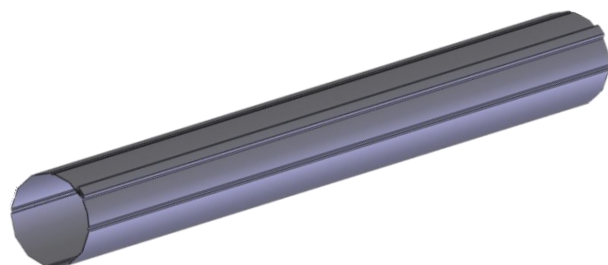
L x W x H:	4600 x 630 x 1200 [mm]
Weight:	~ 950 [kg]
Speed:	~ 11÷12 [m/min]
Drive:	electric
Input material width/gauge:	steel (aluminium 0,7) 276 x 0,5 [mm]
Guillotine (shear):	circular saw
Control (option):	manual (computer)
Power (option):	400 [V] (230 V)





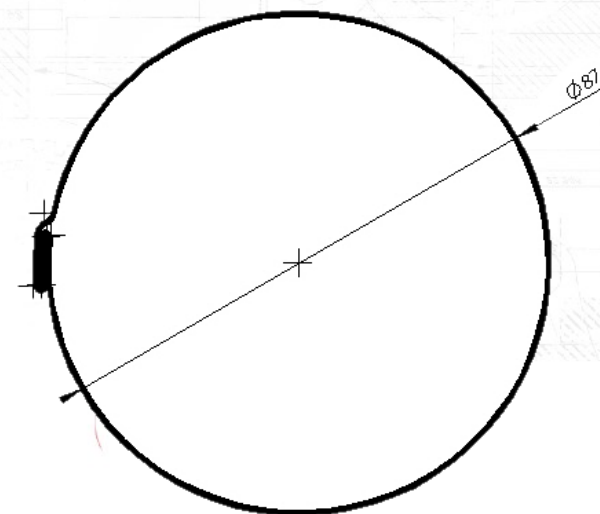
Rollforming Systems Machinery

RS 87



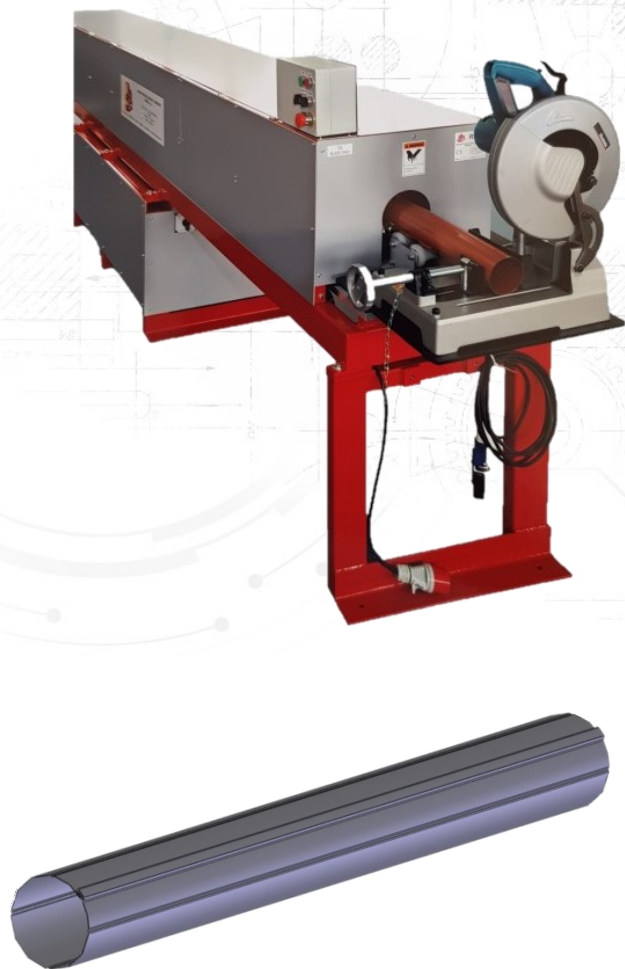
TECHNICAL SPECIFICATIONS

L x W x H:	4800 x 630 x 1200 [mm]
Weight:	~ 970 [kg]
Speed:	~ 11÷12 [m/min]
Drive:	electric
Input material	steel (aluminum 0,7)
width/gauge	297 x 0,5 [mm]
Guillotine (shear):	circular saw
Control (option):	manual (computer)
Power (option):	400 [V] (230 V)





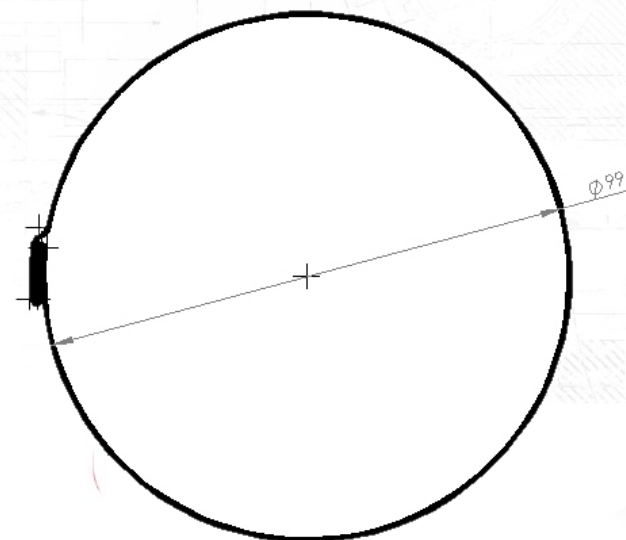
Rollforming Systems Machinery



RS 99

TECHNICAL SPECIFICATIONS

L x W x H:	5000 x 630 x 1300 [mm]
Weight:	~ 1000 [kg]
Speed:	~ 11÷12 [m/min]
Drive:	electric
Input material	stell (aluminum 0,7)
width/gauge	330 x 0,5 [mm]
Guillotine (shear):	circular saw
Control (option):	manual (computer)
Power (option):	400 [V] (230 V)





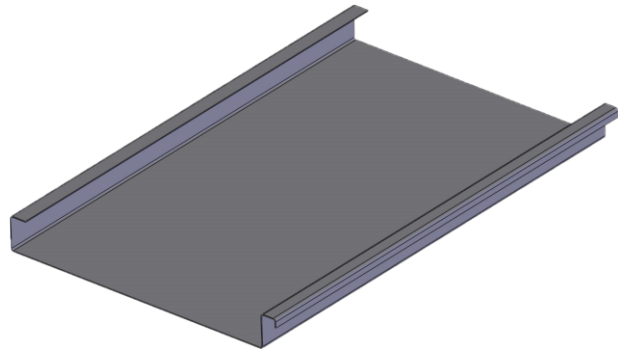
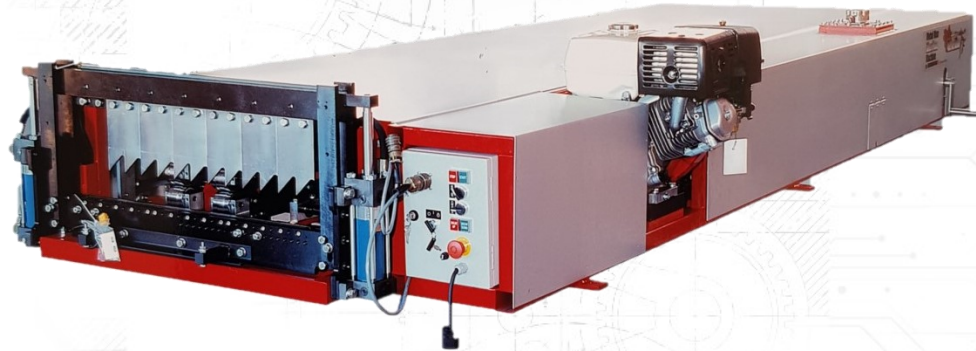
Rollforming Systems Machinery

II. Roofing panel machines



Rollforming Systems Machinery

MPL



TECHNICAL SPECIFICATIONS

L x W x H:	4000 x 1500 x 500 [mm]
Weight:	~ 1180 [kg]
Speed:	~ 10÷15 [m/min]
Drive (option):	gas (electric)
Input material	steel
width/gauge	406÷610 x 0,5÷0,65 [mm]
Guillotine (shear):	hydraulic
Control (option):	manual (computer)
Power (option):	400 [V] (230 V)

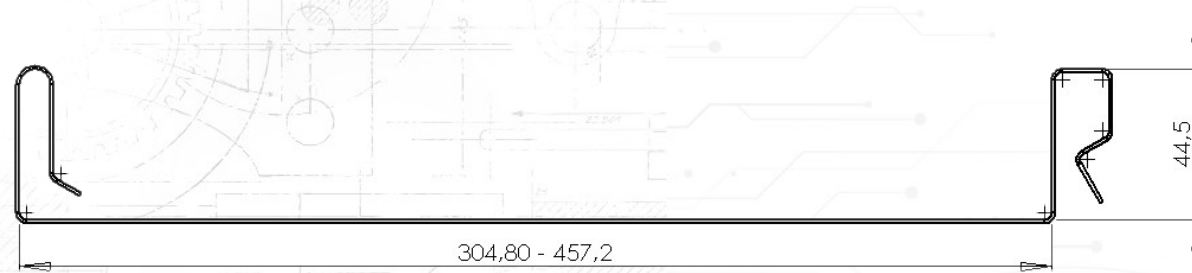
[Profile examples – next pages](#)



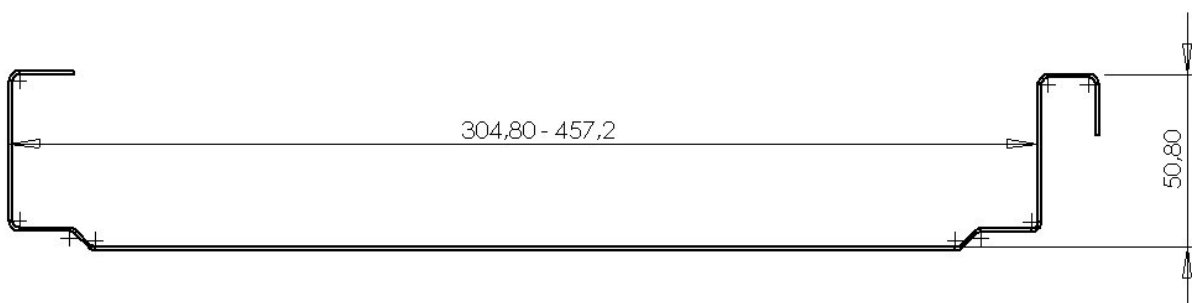
Rollforming Systems Machinery

MPL

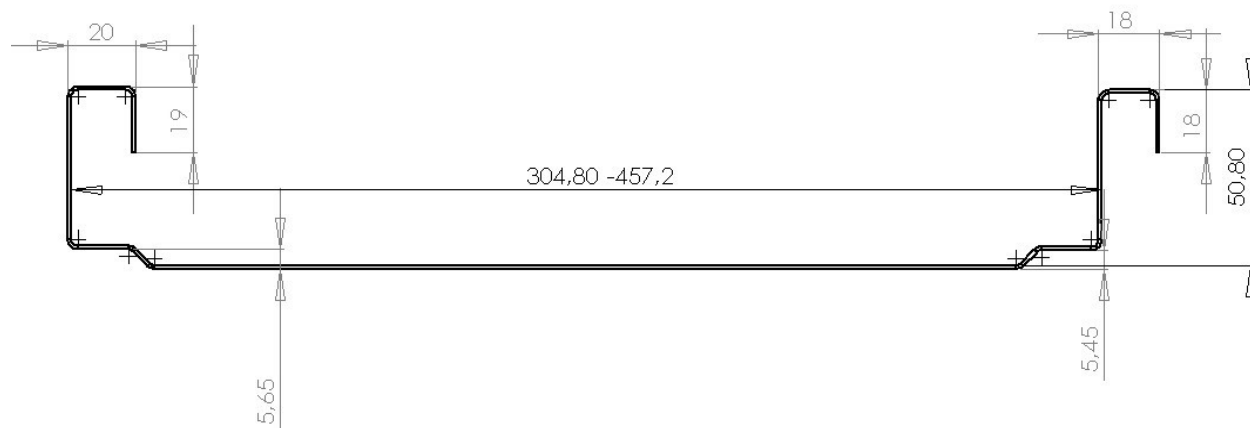
S 2000



S 2400



S 2500

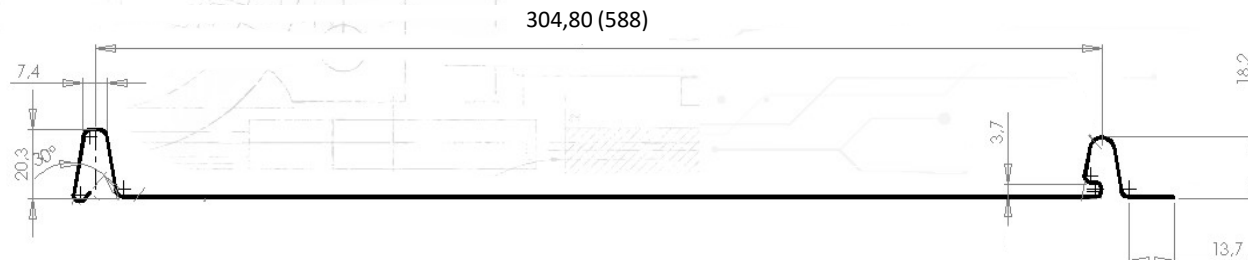




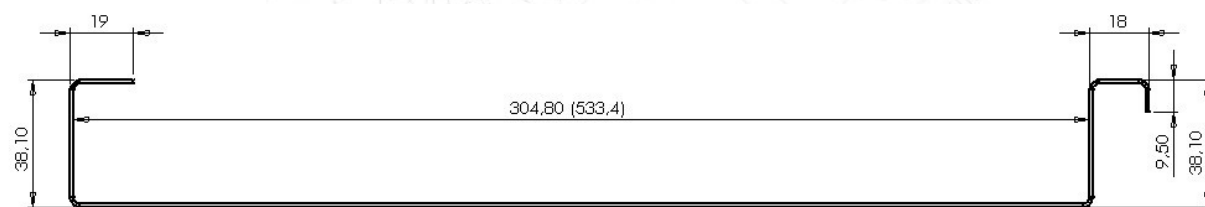
Rollforming Systems Machinery

MPL

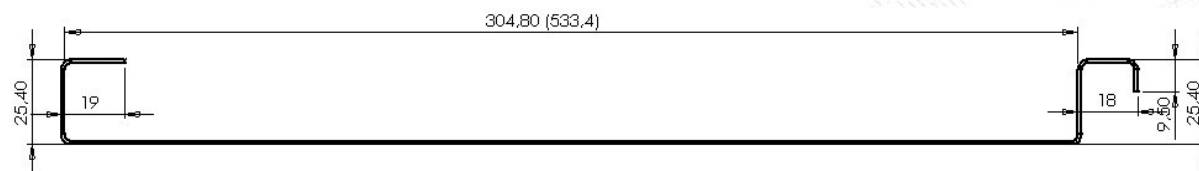
A 1120



A 1300



A 1301





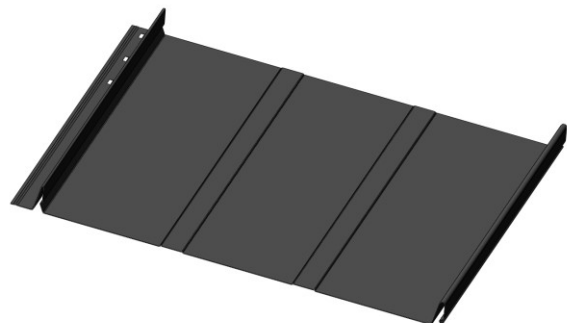
Rollforming Systems Machinery

1105



TECHNICAL SPECIFICATIONS

L x W x H:	3100 x 950 x 1400 [mm]
Weight:	~ 1000 [kg]
Speed:	~ 12 [m/min]
Drive	electric - hydraulic
Input material	stal (aluminium 0,7mm)
width/gauge	406÷610 x 0,5÷0,65 [mm]
Guillotine (shear):	hydraulic
Control (option):	manual (computer)
Power (option):	400 [V] (230 V)





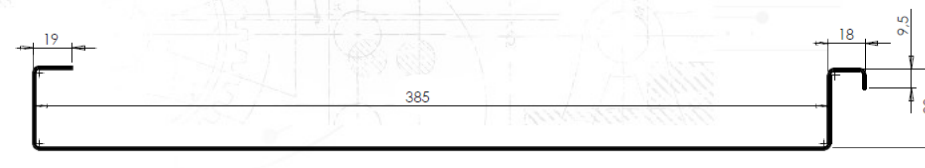
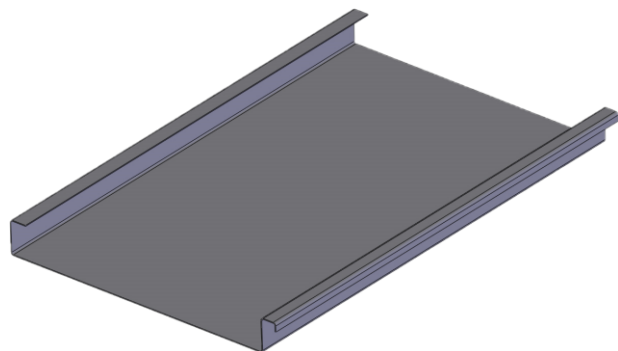
Rollforming Systems Machinery

FP 1300



TECHNICAL SPECIFICATIONS

L x W x H:	3600 x 760 x 700 [mm]
Weight:	~ 950 [kg]
Speed:	~ 11÷13 [m/min]
Drive (option)	electric
Input material	steel
width/gauge	508 x 0,7 [mm]
Guillotine (shear):	manual
Control:	manual
Power (option):	400 [V] (230 V)





Rollforming Systems Machinery

III. Machines for special profiles

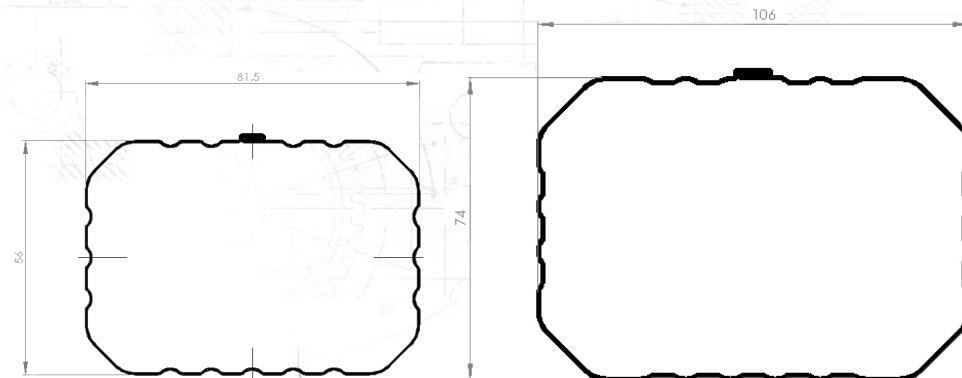
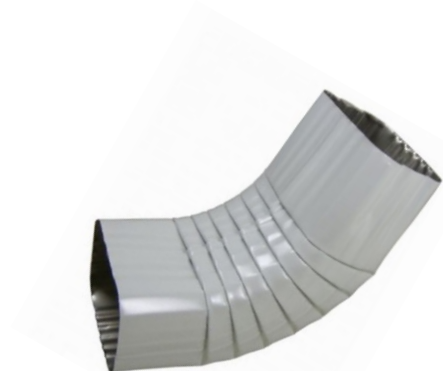
GM 2x3, GM 3x4

Rectangular pipe bending (elbow) machines



TECHNICAL SPECIFICATIONS

L x W x H:	770 x 390 x 340 [mm]
Weight:	~ 160 [kg]
Angle (min/max)	15° / 90°
Drive (option)	electric
Input material	steel (0,5) aluminum (0,7)
Control:	manual
Power:	400 [V]



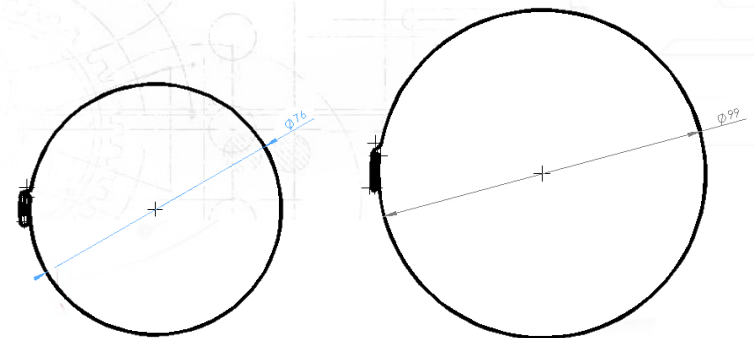
GM 76, GM 99

Round pipe bending (elbow) machines



TECHNICAL SPECIFICATIONS

L x W x H:	770 x 390 x 340 [mm]
Weight:	~ 160 [kg]
Angle (min/max)	15° / 90°
Drive (option)	electric
Input material	steel (0,5) aluminum (0,7)
Control:	manual
Power:	400 [V]

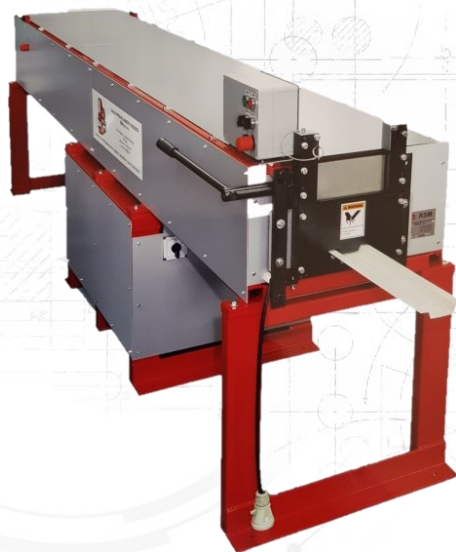




Rollforming Systems Machinery

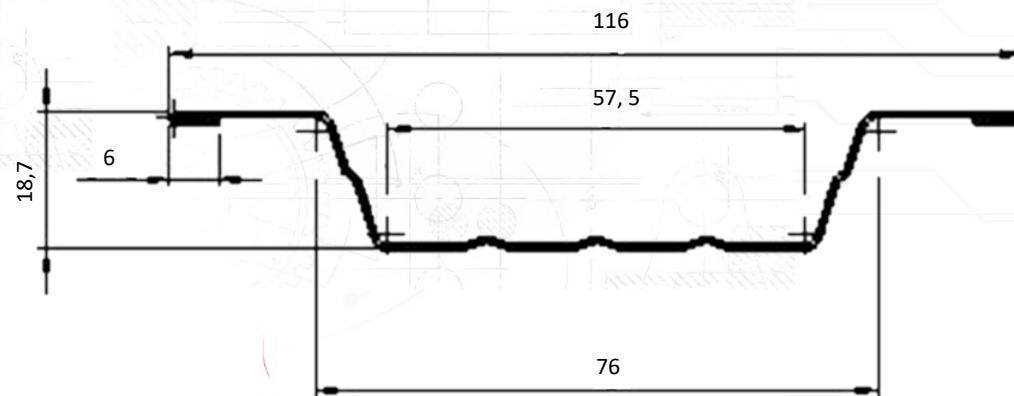
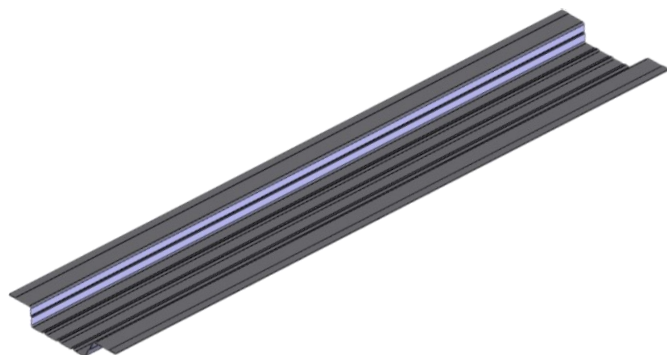
MDS

Machine for special profile – fence panel



TECHNICAL SPECIFICATIONS

L x W x H:	3050 x 710 x 1580 [mm]
Weight:	~ 455 [kg]
Speed:	~ 11÷12 [m/min]
Drive	electric - hydraulic
Input material	steel
width/gauge	153 x 0,7 [mm]
Guillotine (shear):	hydraulic
Control:	computer
Power (option):	400 [V] (230 V)





Rollforming Systems Machinery

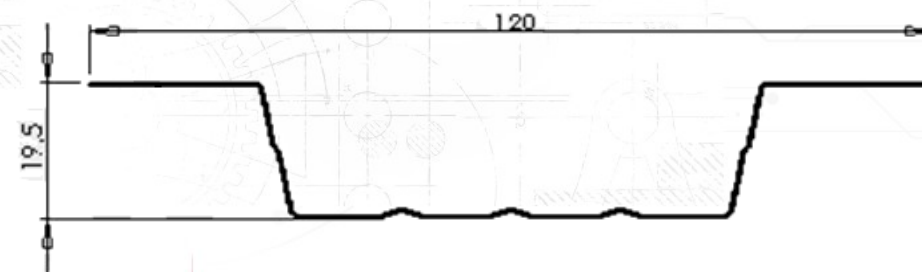
MSH

Machine for special profile – fence panel

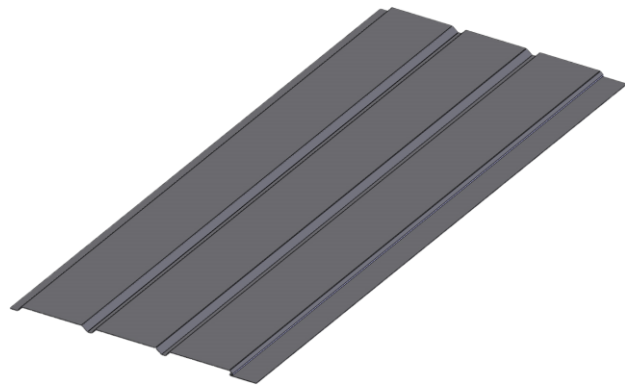


TECHNICAL SPECIFICATIONS

L x W x H:	3500 x 700 x 1120 [mm]
Weight:	~ 750 [kg]
Speed:	~ 11÷13 [m/min]
Drive	electric - hydraulic
Input material	steel (aluminum 0,7 mm)
width/gauge	159 x 0,5 [mm]
Guillotine (shear):	hydraulic
Control:	hydraulic
Power (option):	400 [V] (230 V)

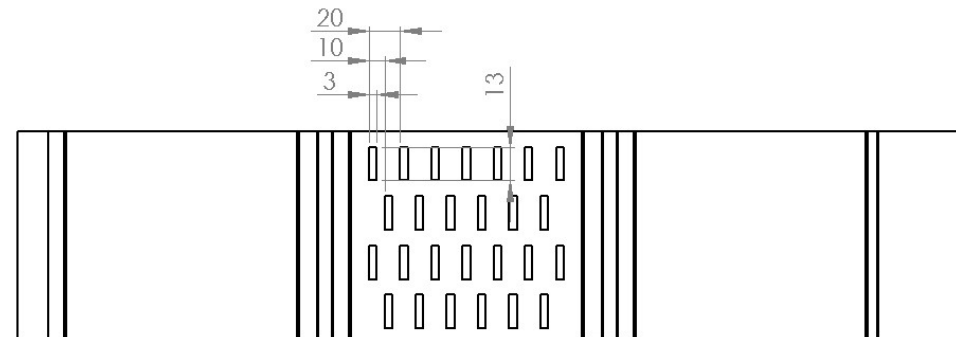
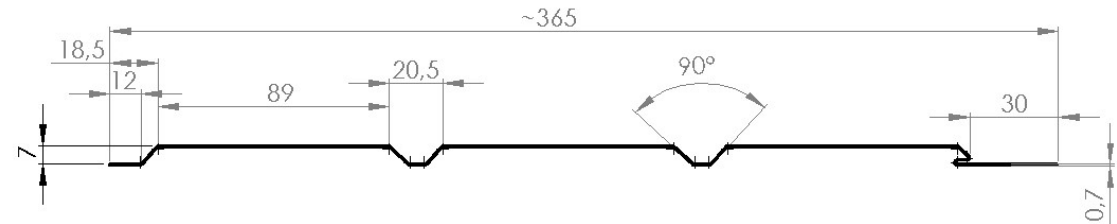


Machine for special profile – soffit panel



TECHNICAL SPECIFICATIONS

L x W x H:	4000 x 650 x 1300 [mm]
Weight:	~ 950 [kg]
Speed:	~ 15 [m/min]
Drive	electric - hydraulic
Input material	aluminum
width/gauge	380 x 0,7 [mm]
Guillotine (option):	manual (hydraulic)
Control (option):	manual (computer)
Power (option):	400 [V] (230 V)

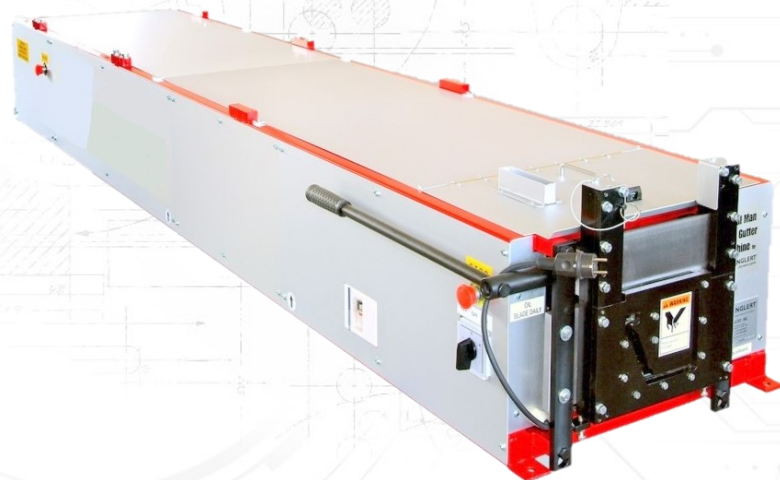




Rollforming Systems Machinery

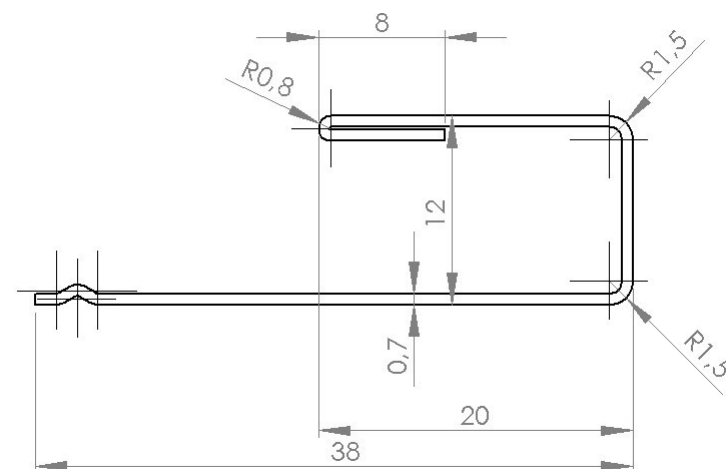
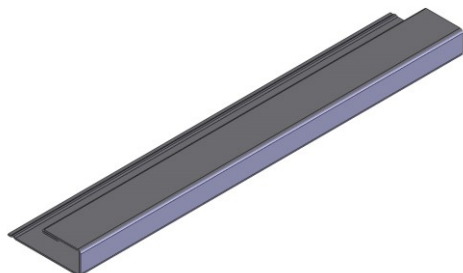
J 75

Machine for special profile – soffit molding



TECHNICAL SPECIFICATIONS

L x W x H:	4000 x 780 x 780 [mm]
Weight:	~ 430 [kg]
Speed:	~ 10÷13 [m/min]
Drive	electric
Input material	steel (aluminum 0,65mm)
width/gauge	83 x 0,5 [mm]
Guillotine (shear):	manual
Control:	manual
Power:	230 [V]

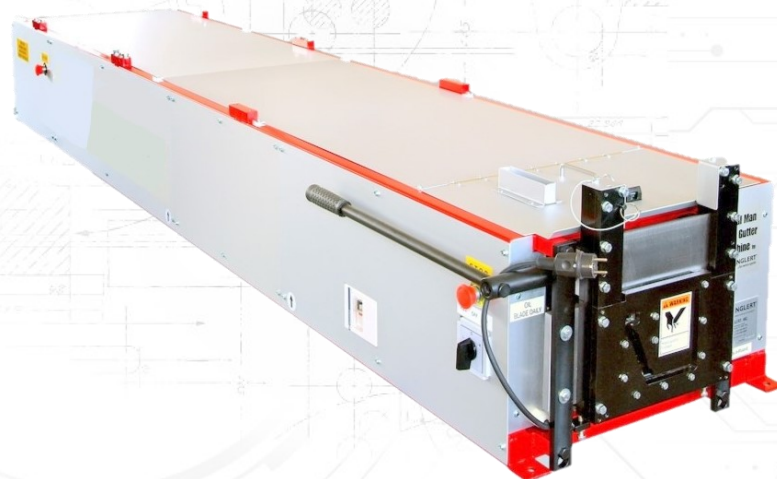




Rollforming Systems Machinery

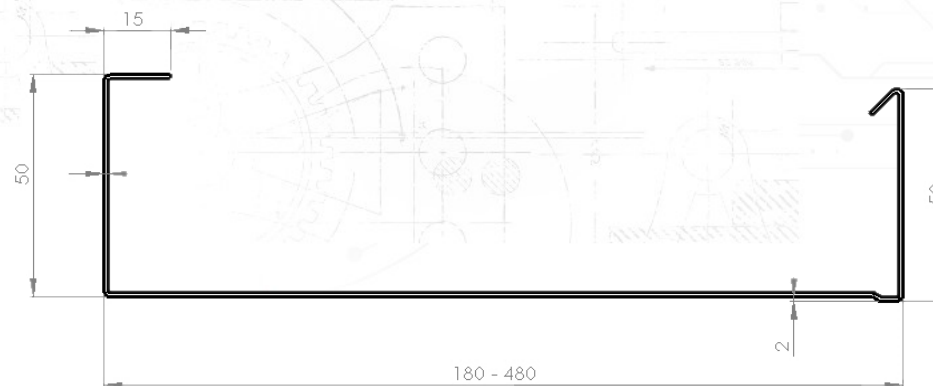
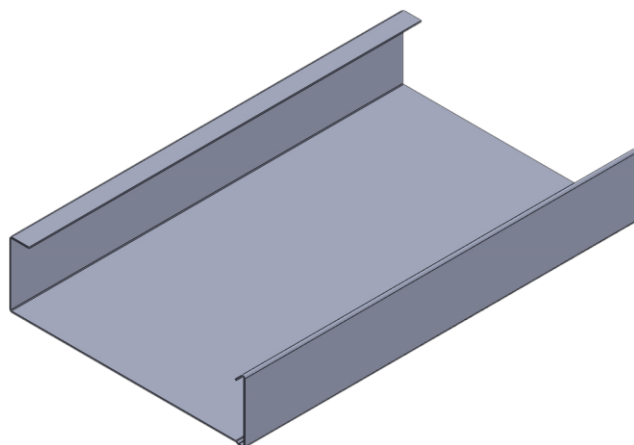
FR6

Machine for special profile – wall cover



TECHNICAL SPECIFICATIONS

L x W x H:	2870 x 937 x 613 [mm]
Weight:	~ 600 [kg]
Speed:	~ 10÷13 [m/min]
Drive	electric
Input material	steel, (aluminium 0,65mm)
width/gauge	310÷610 x 0,5 [mm]
Guillotine (shear):	manual
Control:	manual
Power:	230 [V]





Rollforming Systems Machinery

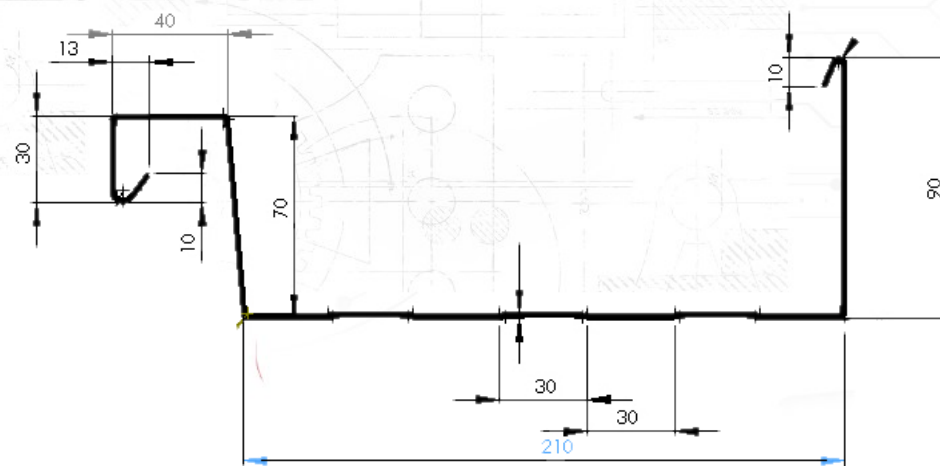
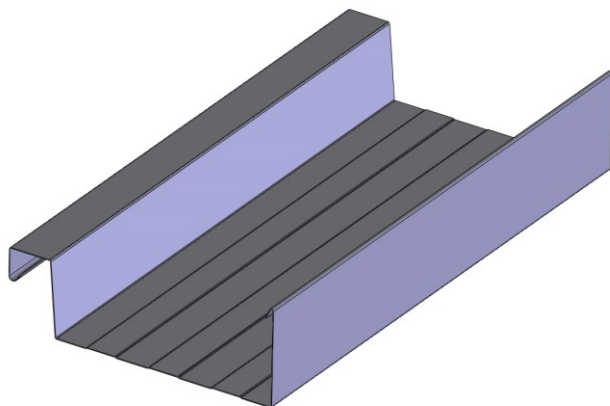
B 205

Machine for special profile – 'gutter'



TECHNICAL SPECIFICATIONS

L x W x H:	2440 x 660 x 450 [mm]
Weight:	~ 455 [kg]
Speed:	~ 10÷13 [m/min]
Drive	elektryczny
Input material	stal, (aluminium 0,7)
width/gauge	457 x 0,5 [mm]
Guillotine (shear):	manual
Control:	manual
Power:	230 [V]





Rollforming Systems Machinery

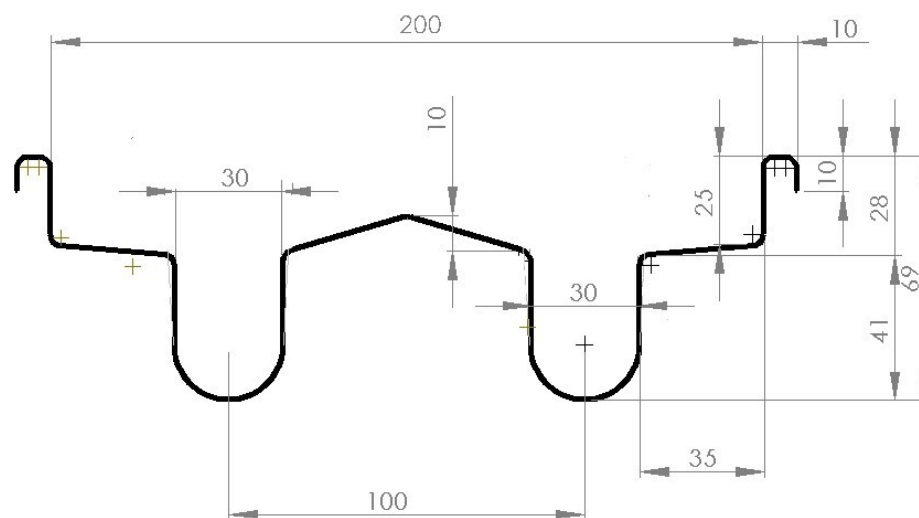
TR 1

Machine for special profile – cultivation trough



TECHNICAL SPECIFICATIONS

L x W x H:	3500 x 1225 x 630 [mm]
Weight:	~ 1900 [kg]
Speed:	~ 10÷13 [m/min]
Drive	gas
Input material	steel, (aluminium 0,7mm)
width/gauge	416 x 0,5 [mm]
Guillotine (option):	manual (hydraulic)
Control (option):	manual (computer)





Rollforming Systems Machinery

IV. Accessories



Rollforming Systems Machinery



Gutter stands



Gutter roller table



Coil cradle



Coil cradle